

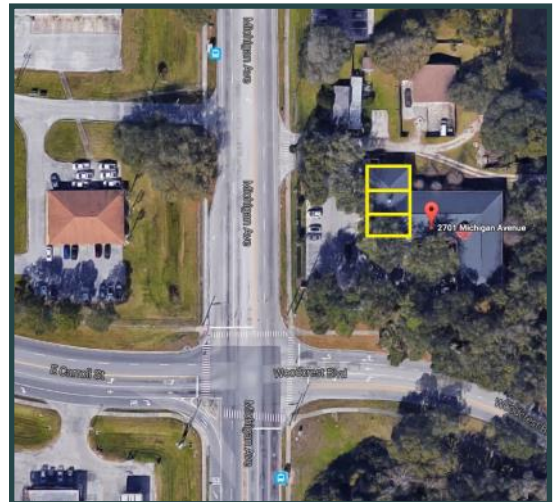
MICHIGAN OAKS SUBLEASE

2,820 SF Office Space Available



LOCATION HIGHLIGHTS

- ◆ Located at the corner of Michigan Ave & Carroll St
- ◆ Traffic Count on Michigan Ave at 28,000+ cars per day
- ◆ Easy access to Osceola Pkwy and Florida Turnpike



Lloyd Commercial Advisors, LLC
100 S. Eola Dr. Suite 200
Orlando, FL 32801
407.704.6120
www.LloydCA.com

Karin Berger
Cell: 786.999.3758
Karin@LloydCA.com

Scott Lloyd, CCIM
Cell: 407.963.7558
Scott@LloydCA.com

MICHIGAN OAKS SUBLEASE

2,820 SF Available; 3 Units of 940 SF



PROPERTY HIGHLIGHTS

- ◆ Individual entrance to Units A, B, and C
- ◆ Attractive Landscaping w/Professional Maintenance
- ◆ Fully Lighted Parking Lot under mature Oak canopy

**5% Broker
Bonus**

Asking \$17/SF

**Term Expires
9/30/2018**



CONTACT FOR MORE INFORMATION:

Karin Berger
Cell: 786.999.3758
Karin@LloydCA.com

Scott Lloyd, CCIM
Cell: 407.963.7558
Scott@LloydCA.com

No warranty or representation, express or implied, is made as to the accuracy of the information contained herein, and same is submitted subject to errors omissions, change of price, rental or other conditions, withdrawal without notice, and to any specific listing conditions, imposed by our principals.

[Lloyd Commercial Advisors, LLC](#) is a Licensed Real Estate Broker.