

16 AC DEVELOPMENT PARCEL FOR SALE

530-630 E CROWN POINT RD
WINTER GARDEN, FL 34787



**OFFERED AT
\$3,400,000**

Property Features:

- **16.0 ± Acres, Level, High & Dry**
- **1,300 ± Feet of E. Crown Point Rd. Frontage**
- **Signalized Corner coming soon**
- **Zoned C-2 (City of Winter Garden)**
- **Multiple Ingress and Egress Points**
- **Master Retention Off-site & Utilities In-place**
- **Instant Access to SR 429 & Florida Turnpike**
- **Seller May Divide**

2021 (Projected)	Within 1 Mile	Within 3 Miles	Within 5 miles
Population	6,650	55,977	141,688
Median In-	\$63,904	\$58,865	\$65,484

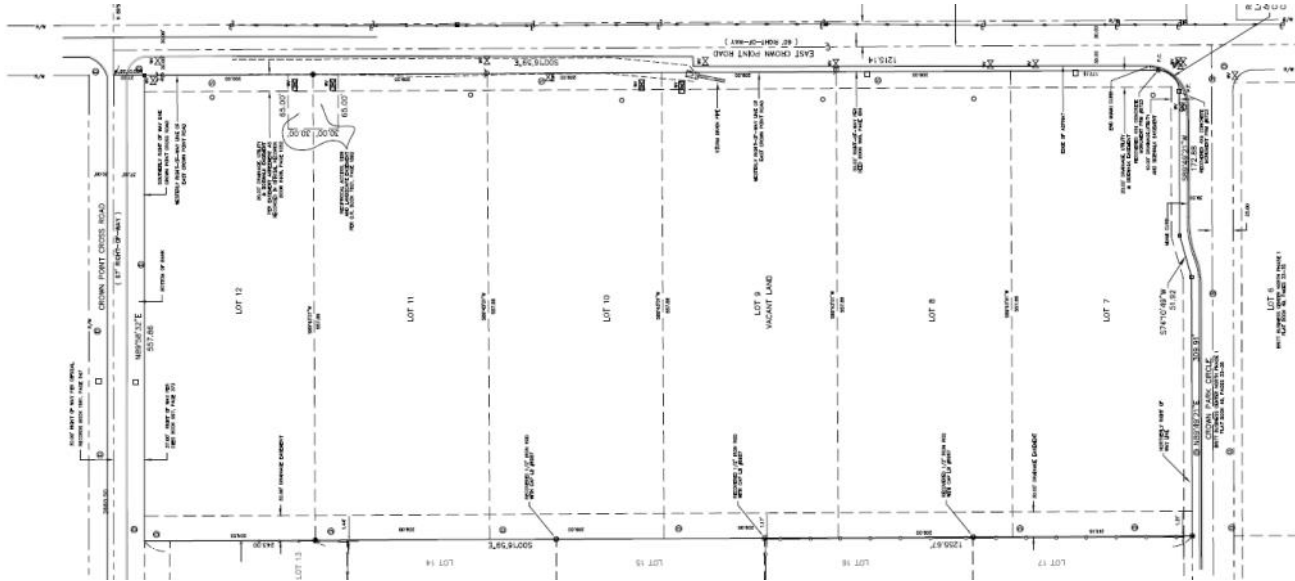
Lloyd Commercial Advisors, LLC
100 S. Eola Dr. Suite 200
Orlando, FL 32801
www.LloydCA.com

CONTACT:

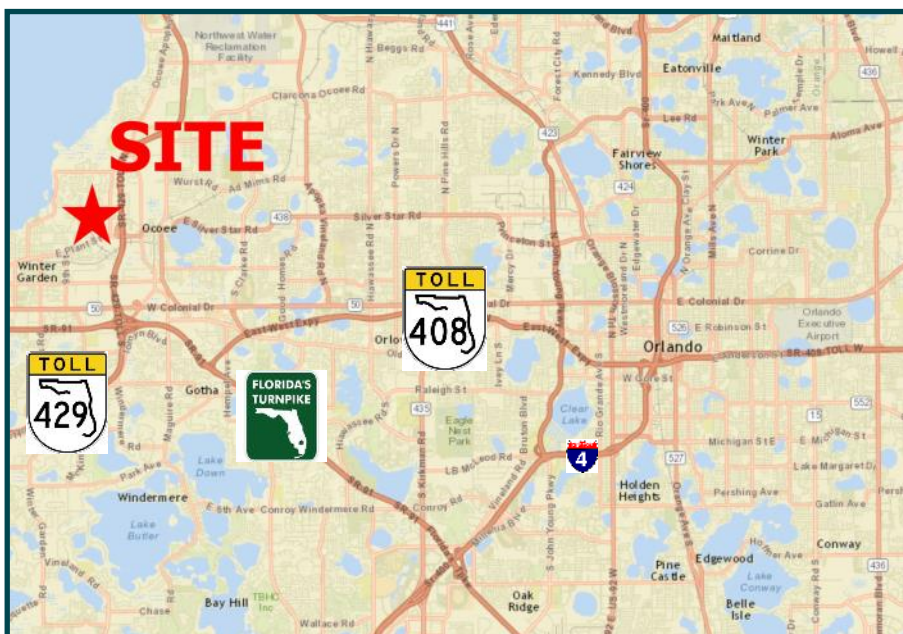
Scott Lloyd CCIM, RPA
Cell: 407-963-7558
Scott@LloydCA.com

16 AC WINTER GARDEN DEVELOPMENT PARCEL FOR SALE

Offered at \$3,400,000



- Six (6) Lots—May Be Divided
- Instant Access to SR 429
- 2 Miles From the Florida Turnpike; 3.5 Miles from SR 408
- 13 Minutes from Downtown Orlando
- Offered at \$212,500 Per Acre (\$4.88 Per Sq. Foot)



FOR MORE INFORMATION

Scott Lloyd CCIM, RPA

Cell: (407) 963-7558

Scott@LloydCA.com

LloydCA.com

COMMERCIAL
LLOYD
 ADVISORS