

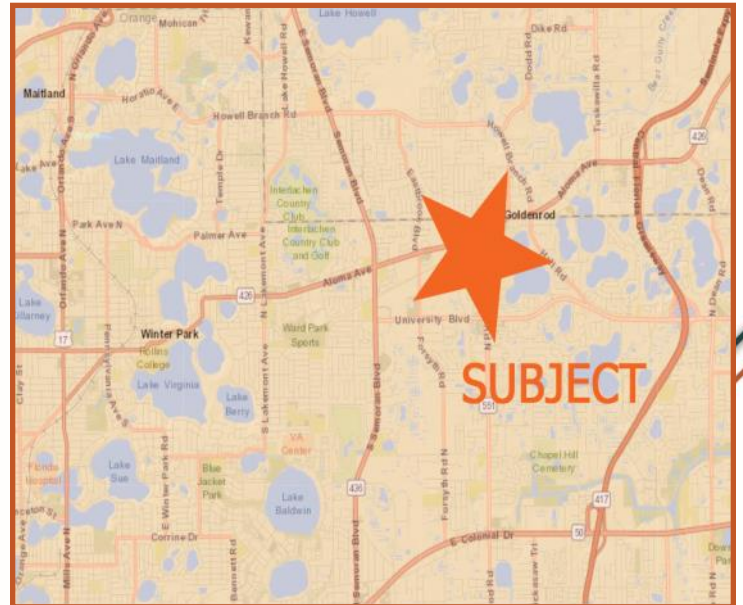
100% AIR-CONDITIONED FLEX WAREHOUSE FOR SUBLEASE



**7307 SANDSCOVE CT.
WINTER PARK, FL 32792**

RARE 100% AIR CONDITIONED FLEX WAREHOUSE SUBLEASE

- ◆ 12,960 SQ FT WAREHOUSE/ OFFICE SPACE FOR SUBLEASE
- ◆ TURN KEY & READY FOR IMMEDIATE OCCUPANCY
- ◆ SMALL RECEPTION, OFFICE, & 3 RESTROOMS
- ◆ 100% AIR CONDITIONED WAREHOUSE
- ◆ OFFERED WELL BELOW MARKET AT \$8.00 PER SQ FT GROSS
- ◆ IND-2 / IND -3 ZONING
- ◆ LEASE TERM ENDS 2/28/21



Contact:

Scott Lloyd CCIM, RPA

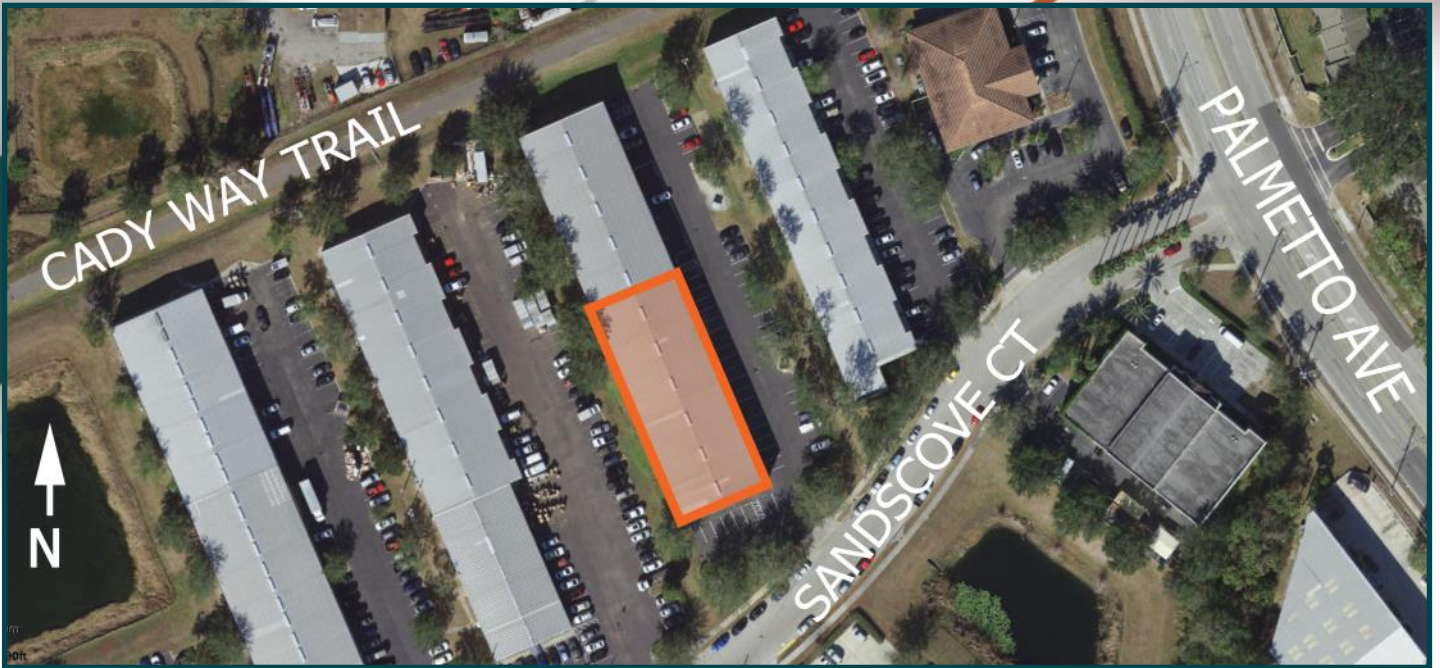
Scott@LloydCA.com | Cell: 407-963-7558

100 S Eola Drive, Suite 200 | Orlando, FL 32801

COMMERCIAL
LLOYD
ADVISORS

BELOW MARKET FLEX SUBLEASE

7307 SANDSCOVE CT, WINTER PARK, FL 32789



- ◆ TURN KEY & READY FOR IMMEDIATE OCCUPANCY
- ◆ 6 BAYS WITH 70' DEPTH - ENDCAP
- ◆ 6 12'X14' GRADE LEVEL DOORS
- ◆ AMPLE PARKING
- ◆ 24' CLEAR HEIGHT
- ◆ 3 PHASE THROUGHOUT
- ◆ MINUTES FROM SR 417 & UCF
- ◆ EXCELLENT GYM OR CROSS FIT FACILITY



Contact:
Scott Lloyd CCIM, RPA
Scott@LloydCA.com | Cell: 407-963-7558
100 S Eola Drive, Suite 200 | Orlando, FL 32801

COMMERCIAL
LLOYD
ADVISORS