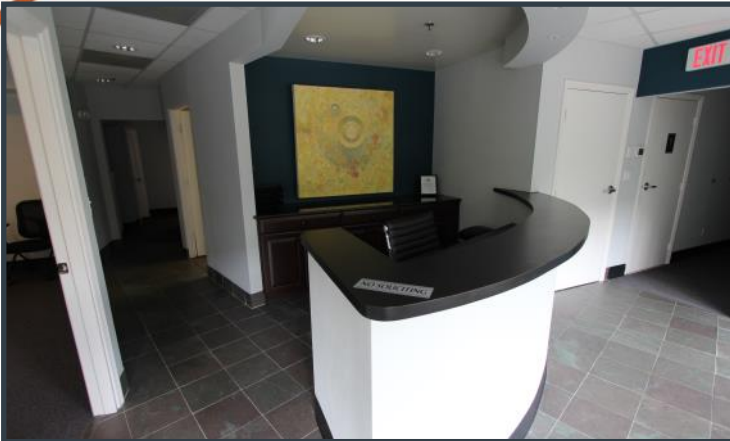


HANNIBAL SQUARE OFFICE FOR SUBLEASE

\$25.00 PSF (net elect.)



**558 W. NEW ENGLAND AVE SUITE 250
WINTER PARK, FL 32789**



- ◆ **4,154 ± SF RENTABLE**
- ◆ **8 OFFICES, CONFERENCE & BREAK ROOM**
- ◆ **2ND FLOOR OFFICES**
- ◆ **HIGHLY DESIRABLE WINTER PARK LOCATION**
- ◆ **WALK-ABILITY SCORE OF 84— VERY WALKABLE**
- ◆ **PLUG & PLAY, W/MULTIPLE DEMISING OPTIONS**
- ◆ **PRESENT LEASE EXPIRATION 8/31/23 — BELOW MARKET RATE**

Contact Scott Lloyd
Scott@LloydCA.com

M: (407) 963-7558

Contact:
Scott Lloyd CCIM, RPA
Scott@LloydCA.com | Cell: 407-963-7558
100 S Eola Drive, Suite 200 | Orlando, FL 32801

COMMERCIAL
LLOYD
ADVISORS

4,154 SQ FT WINTER PARK SUBLEASE HANNIBAL SQUARE OFFICE SPACE

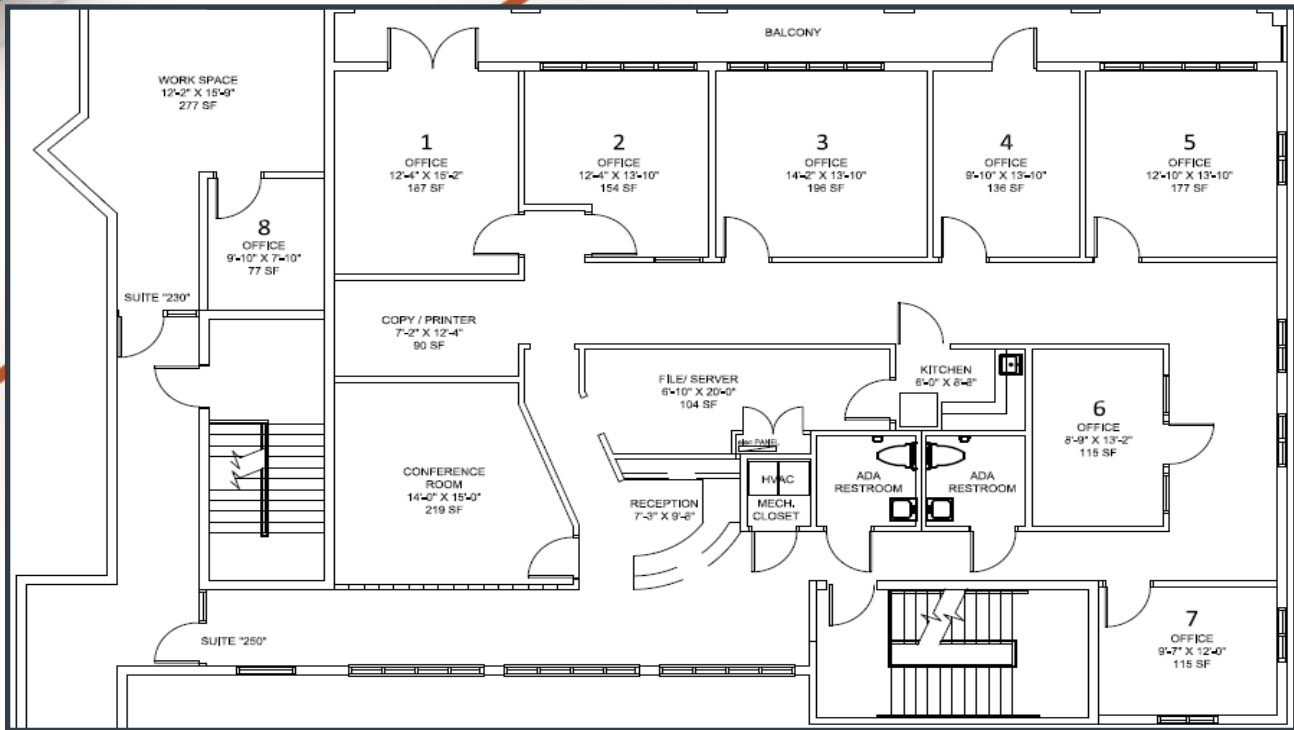
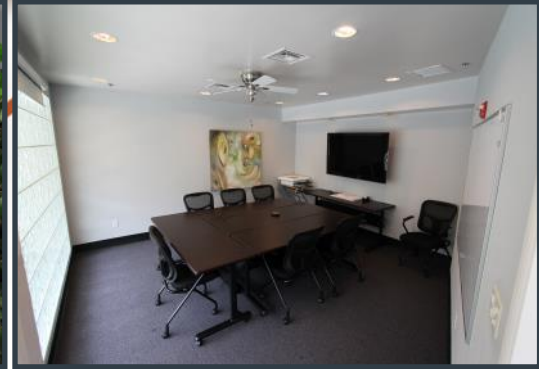
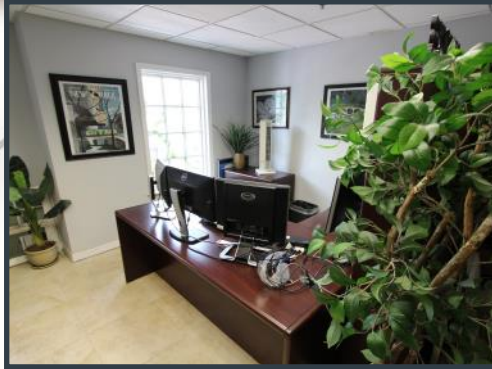
**DEDICATED PARKING, RECEPTION
AREA & ELEVATOR**

IDEAL OFFICE LAYOUT

**BALCONY OVERLOOKING
NEW ENGLAND AVE**

**3 BLOCKS FROM WORLD FAMOUS
PARK AVE**

**FURNITURE AVAILABLE — MOVE IN
READY**



This information has been obtained from sources believed reliable, but has not been verified for accuracy or completeness. Any projections, opinions, or estimates are subject to uncertainty. Any reliance on this information is solely at your own risk. No warranty or representation, express or implied, is made as to the accuracy of the information contained herein, and same is submitted subject to errors omissions, change of price, rental or other conditions, withdrawal without notice, and to any specific listing conditions, imposed by our principals. Lloyd Commercial Advisors, LLC is a Licensed Real Estate Broker



Contact:
Scott Lloyd CCIM, RPA
 Scott@LloydCA.com | Cell: 407-963-7558
 100 S Eola Drive, Suite 200 | Orlando, FL 32801

